

SpeedyPacker system

Procedure for replacing the Edge Seal Tape.

This procedure must be carried out by trained and qualified personnel



1) Turn the SpeedyPacker OFF and open the front cover.



2) Turn the black film roller with your hand and remove the old Teflon tape from the roller.



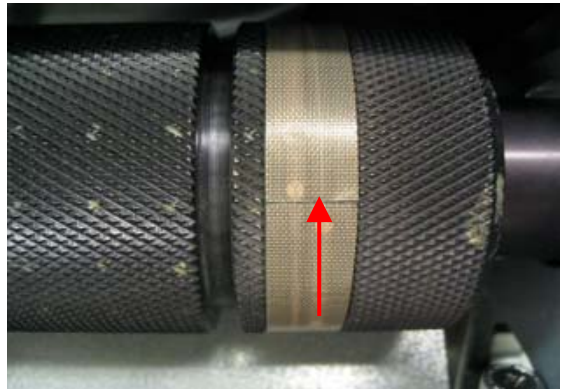
3) Use a scotch pad to clean the edge seal ring.



4) Remove the first part of the plastic protection from the new Teflon tape, and place one end of the tape on the edge seal ring.



5) Turn the film roller with your hand and guide the Teflon tape on to the edge seal ring.



6) Be sure there is no space between the two tape ends after it is placed. Close the front cover and turn ON the SpeedyPacker.